

# Sample Itinerary



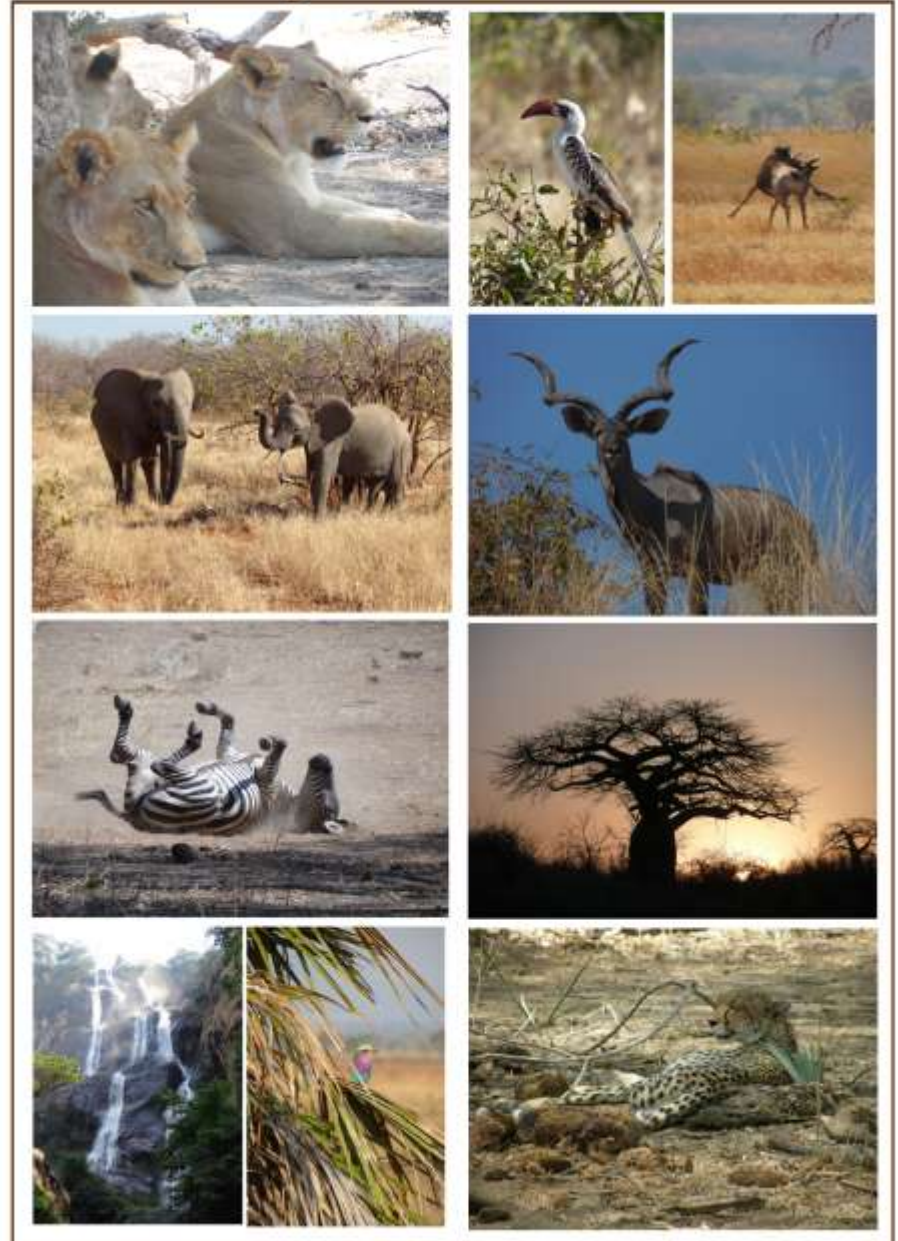
## Sample Itinerary

### Selous, Mikumi, Udzungwa & Ruaha

Game Drives	Night Safari
Walking Safaris	River Safari
Mobile Camping	Cultural Village Tour

### When to go?

These parks can be experienced throughout the year, though the driest months are June to December. It is the most popular time to visit the parks due to the concentration of animals. The very best time to travel to Southern Tanzania is probably late July to early November. The coldest months are June and July, however days are usually warm and cloudless. The rainy season is most intense from late December to March.



## MAPPING YOUR SAFARI



- A** Ruaha National Park
- B** Udzungwa Mountains National Park
- C** Mikumi National Park
- D** Selous Game Reserve

## ITINERARY OVERVIEW

Date	Activity	Accommodation
Day 1	Depart JNIA Dar Es Salaam via Coastal Air Arrive at Selous Game Reserve Transfer to Camp & pick up box lunch Full day game drive with Tatanca Safaris	Sable Mountain Camp
Day 2	Morning walking safari along park boundry Afternoon game drive in Selous Game Reserve Evening boat safari on Rufji River	Sable Mountain Camp
Day 3	Depart for Mikumi National Park Arrive and check in at camp & take lunch Evening game drive (4 pm- 6 pm) Night Game Drive ( 7 pm – 10 pm)	Mikumi Wilderness Camp
Day 4	Early morning game drive in Mikumi Park Depart Mikumi & drive through to Udzungwa Check in at Lodge & take dinner	Udzungwa Falls Lodge
Day 5	Morning hike to Sanje Falls/Primate Viewing Village Visit/Elephant conservation project Depart for Iringa by 3:30 pm Check in at hotel & take dinner	Zakinn
Day 6	Depart for Ruaha National Park Morning game drive Check in at lodge & take lunch Late afternoon game drive Night Game Drive	Ruaha River Lodge
Day 7	Morning walking safari in Ruaha Park Lunch at the lodge with rest break Evening game drive with Tatanca Safaris Return to lodge for dinner	Ruaha River Lodge
Day 8	Depart for Dar Es Salaam via Auric Air Arrive and check in at beach resort	Kipepo Beach